

METAL MAN[®]

Economy Cabinet with Dorr OWNER'S MANUAL



8/2020

 **WARNING:**

Read carefully and understand all **ASSEMBLY AND OPERATION INSTRUCTIONS** before operating. Failure to follow the safety rules and other basic safety precautions may result in serious personal injury.

METAL MAN[®]

EFFECTIVE June 1, 2015

LIMITED WARRANTY

This warranty applies to the original purchaser and is subject to the terms and conditions listed below. This Limited Warranty is for new equipment sold after the above date, providing coverage for defects in material and workmanship at the time it is shipped from the factory.

Limited to the warranty periods below, METAL MAN WORK GEAR CO will repair or replace the item under warranty that fails due to defects in material and workmanship. METAL MAN WORK GEAR CO must be notified within 30 days of the failure, so as to provide instructions on how to proceed with the repair of your unit and warranty claim processing. Warranty period begins at the time the unit is purchased from and Authorized METAL MAN WORK GEAR retailer. **Keep your receipt as proof of purchase.**

Warranty Periods

90 Days Warranty on METAL MAN Branded welding carts

Limited Warranty

All parts for METAL MAN branded welding carts. This warranty covers the absence of, or defective parts.

Voiding Warranty

Warranty does not apply to: shipping damage, misuse and abuse of the unit and alteration of the unit in any way.

Warranty Claim

This is a Parts only warranty. **Contact METAL MAN WORK GEAR CO AT 888-762-4045**. Retain your receipt in the case a warranty claim is needed. No warranty will be provided without the original receipt from an authorized METAL MAN WORK GEAR dealer.

GENERAL SAFETY RULES



WARNING: Read and understand all instructions. Failure to follow all instructions listed below may result in serious injury or death.



CAUTION: Do not allow persons to operate or assemble this unit until they have read this manual and have developed a thorough understanding of how this unit works.



WARNING: The warnings, cautions, and instructions discussed in this instruction manual cannot cover all possible conditions or situations that could occur. It must be understood by the operator that common sense and caution are factors which cannot be built into this product but must be supplied by the operator.

SAVE THESE INSTRUCTIONS

USE AND CARE

- **Do not modify this unit in any way.** Unauthorized modification may impair the function and/or safety and could affect the life of the equipment. There are specific applications for which this unit was designed.
- **Always check for damaged or worn out parts before using this unit.** Broken parts will affect the operation. Replace or repair damaged or worn parts immediately.
- **Store idle.** When this unit is not in use, store it in a secure place out of the reach of children. Inspect it for good working condition prior to storage and before re-use.

SPECIFICATIONS

Item	Description
Product Dimension	33.2" x 18.5" x 25.5"
Packaging Dimension	26.8" x 16.5" x 22"
Weight	42 lbs.
Loading Capacity	150 lbs.



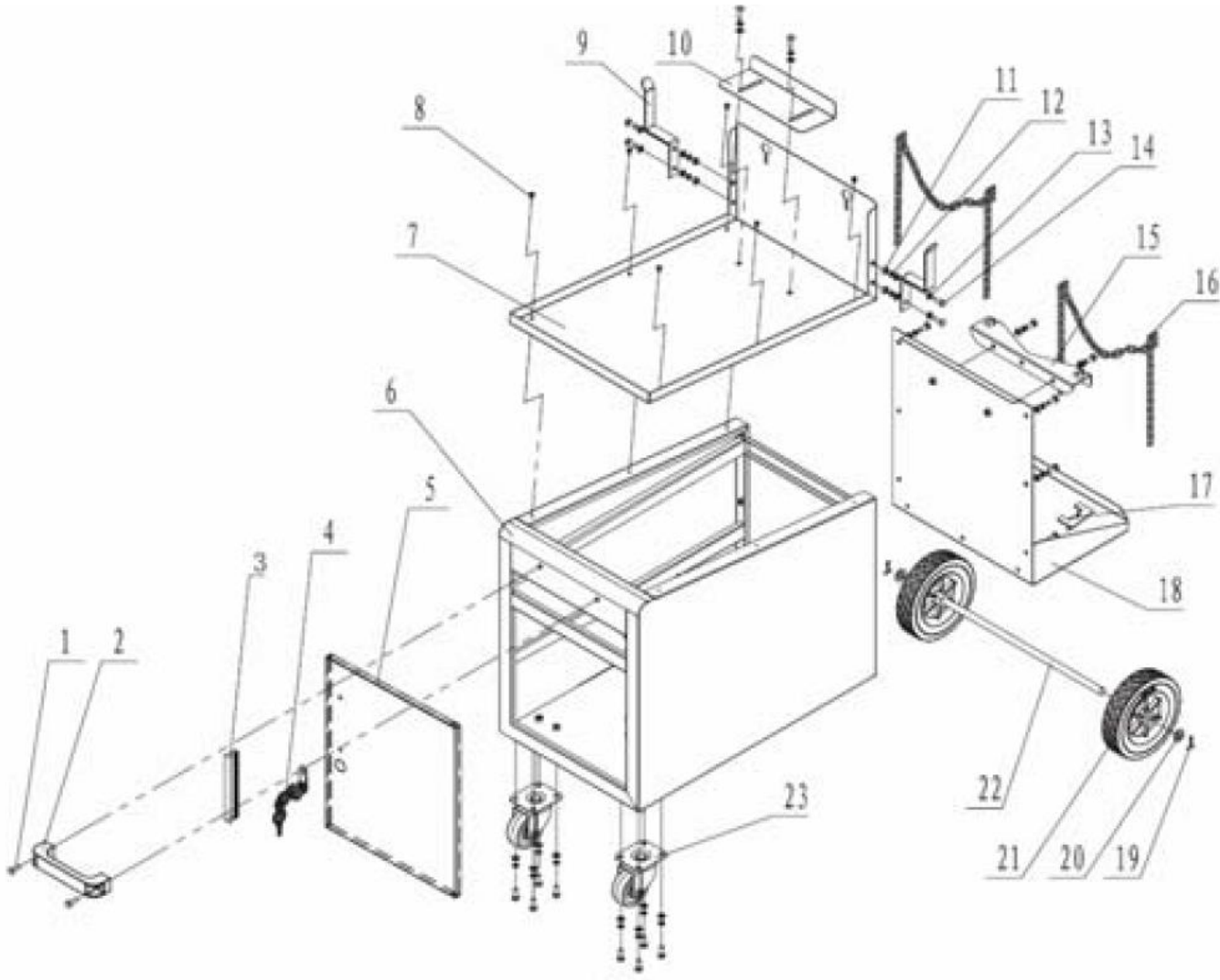
DESCRIPTION

Economy welding cabinet provides an integrated all-in-one solution for portable welder and a gas cylinder combination. Designed for welder to sit on the 21.2" X 13" area on top and holds up to 7-1/2" diameter shielding gas cylinders. Side hooks hold cables, helmets or MIG gun. The door is 12.2" X 10.5" and designed for a helmet, angle grinder, drill, contact tips, nozzles, and other smaller items. 6" X 1.15" rear wheels and 2.5" X 1" front casters for ease of movement.

ASSEMBLY OPERATION

1. Remove cart pieces from carton, bags, or foam.
 2. Check contents with parts list to make sure all components are inside.
 3. Take parts out of the cabinet door.
 4. Install handle.
 5. Install gas cylinder holder.
 6. Install the top shelf of the welding cabinet.
 7. Lay cabinet down on its side to install the casters and back wheels.
 8. Stand the cabinet up and adjust the stop on the top shelf according to your machine length.
 9. Insert the retention chain on the back of the panel for holding the gas cylinder.
- Complete Assembly

DIAGRAM & PARTS DIAGRAM



Reference #	Part#	Description	Qty.
1	105100024	HEX BOLT M6*25	2
2	105100025	HANDLE	1
3	105100026	DOOR HANDLE	1
4	105100114	DOOR LATCH	1
5	115100001	DOOR	1
6	125100005	FRAME	1
7	105100028	TOP SHELF	1
8	105100029	NUT T4.2*9.5	6
9	105100035	CABLE WRAP	2
10	105100030	ADJUSTMENT SLIDE	1
11	105100031	HEX NUT M6	6
12	105100045	LOCK (SPRING) WASHER	27
13	105100033	FLAT WASHER	29
14	105100034	HEX BOLT M6*16	25
15	105100035	CYLINDER BRACKET	1
16	105100036	CYLINDER SECURMENT CHANIN	2
17	105100037	AXLE CLIPS	2
18	105100038	CYLINDER SUPPORT TRAY	1
19	105100001	COTTER PIN 2.5*25	2
20	105100002	FLAT WASHER 12	2
21	105100039	REAR WHEEL	2
22	105100040	AXLE	1
23	105100041	CASTOR WHEEL	2

METAL MAN[®]

Metal Man Work Gear Company

1760 Prospect Ct #120

Appleton, WI 54914

www.metalmangear.com

888-762-4045